



ACUTE ISCHEMIC STROKE:

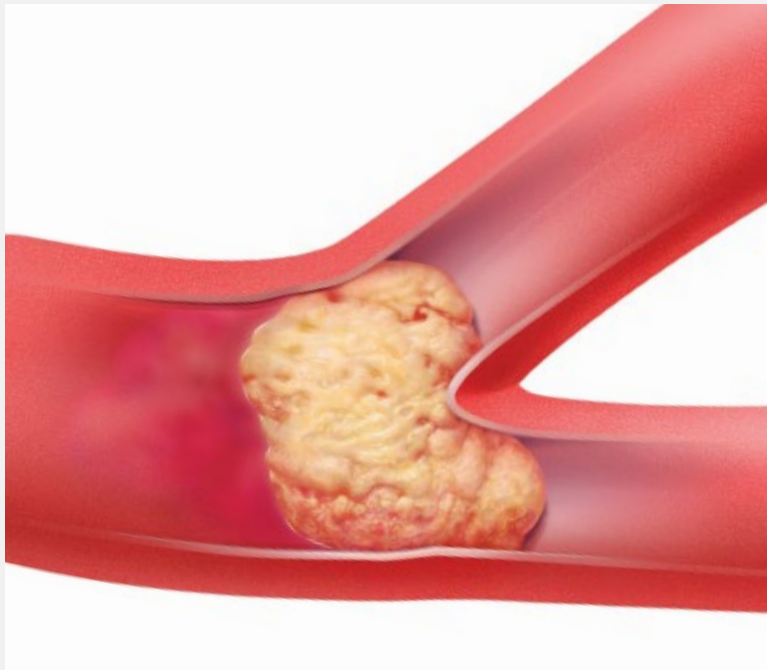
What You Need to Know about Acute Ischemic Stroke Treatment



Together to End Stroke®



WHAT IS AN ACUTE ISCHEMIC STROKE?



An acute ischemic stroke occurs as a result of obstructed blood flow in a blood vessel to the brain.



WHEN A STROKE OCCURS

*Quick decisions and timely
treatment may improve recovery.*



*Every second counts
in preventing brain damage!*



ACUTE ISCHEMIC STROKE TREATMENT:

Dissolve clot with tissue plasminogen activator alteplase (IV r-tPA).



The benefits of IV alteplase are greatest when given as quickly as possible. Time is brain!

Benefits

- *For patients who can be treated within 3 hours of stroke onset, alteplase (IV r-tPA) can lead to better recovery after stroke*
- *For select patients who are eligible to be treated up to 4.5 hours after stroke onset, alteplase (IV r-tPA) can also improve outcomes*
- *Alteplase (IV r-tPA) has been proven to save lives and decrease disability when administered in a timely manner*

Risks

- *Bleeding of the brain, gums or other tissues are major risks*



ACUTE ISCHEMIC STROKE TREATMENT:

Remove larger clots with a stent retriever (eligible patients only).



Patients **should** receive alteplase (IV r-tPA) before being considered eligible for mechanical thrombectomy treatment (use of stent retriever), which removes large blood clots that cause acute ischemic stroke.

Benefits

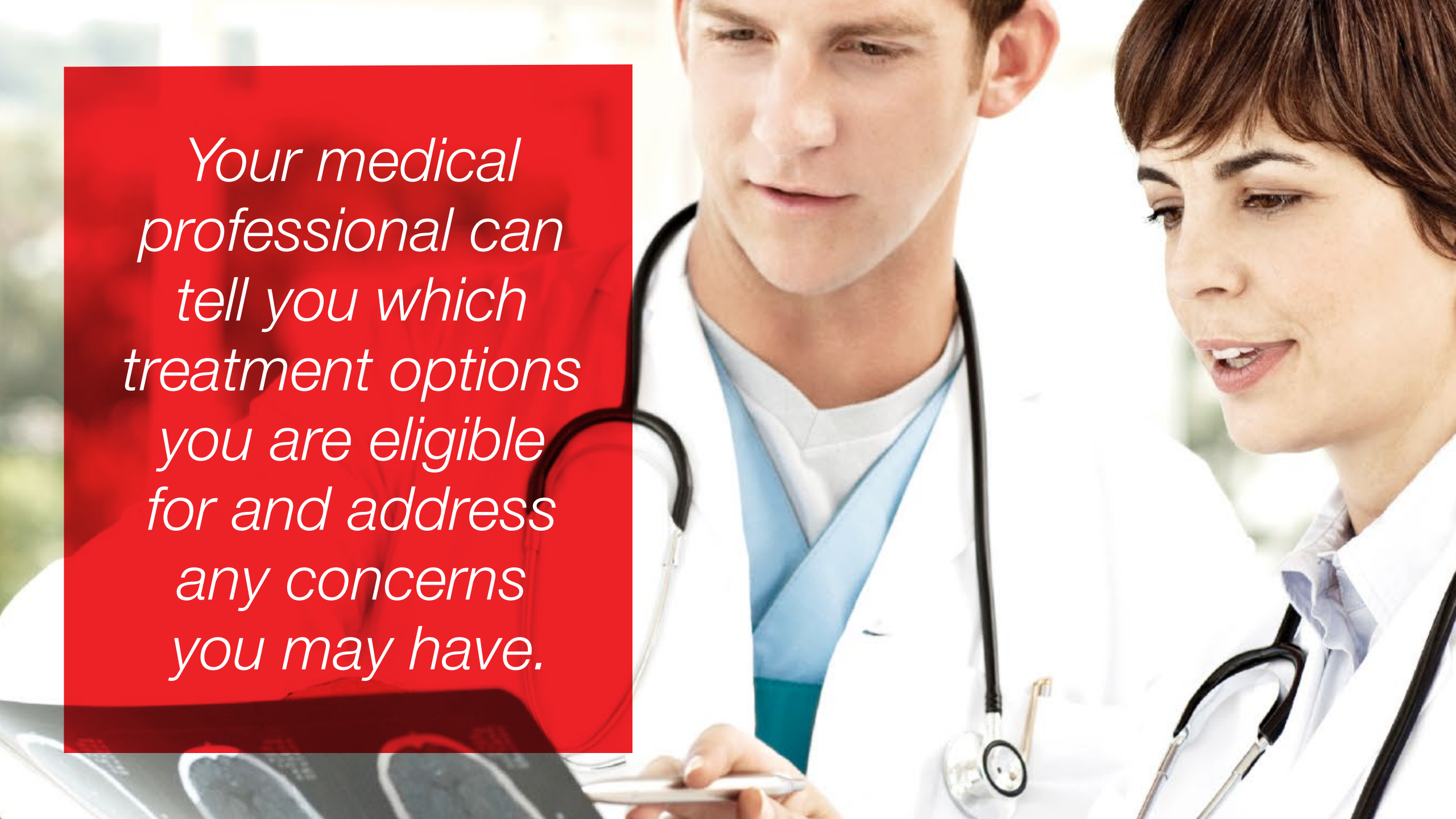
- *For select patients who are eligible to be treated up to 24 hours after stroke onset, mechanical thrombectomy has proven to be effective in lowering disability from stroke.*

Risks

- *Bleeding (the most common associated risk)*
- *Tearing of the inner lining of the blood vessel*



Your medical professional can tell you which treatment options you are eligible for and address any concerns you may have.



For more information on stroke, visit:
StrokeAssociation.org



American
Heart
Association

American
Stroke
Association®

Together
to End Stroke®

life is why®